



Registration Statistics

**Annual General Meeting
October 19, 2024
Douglas College – New Westminster**

2024 BCLA Official Registration Total	2024	2024	2023	2023	2022	2022	2021	2021	2020	2020
Divisions	Players	Teams	Players	Teams	Players	Teams	Players	Teams	Players	Teams
Box Lacrosse - Minor										
Development/Recreational	0	0	30	0	1500	0	1000	0	0	0
Female Box Lacrosse										
U9	128	10	87	5	62	4	86	6	94	0
U11	267	16	250	15	162	11	131	9	218	0
U13	331	20	202	12	167	10	242	17	316	0
U15	273	21	246	16	270	22	272	18	293	0
U17	276	20	247	17	206	11	218	15	246	0
Junior	241	13	235	14	218	10	179	10	142	0
Sub-Total	1516	100	1267	79	1085	68	1128	75	1309	0
Minor Box Lacrosse										
U7	907	83	884	77	836	69	716	63	785	0
U9	1536	116	1432	107	1093	81	1016	70	1134	0
U11	1390	84	1122	69	993	60	1052	66	1190	0
U13	1184	70	1127	66	1012	59	1127	64	1250	0
U15	879	50	966	53	1049	58	990	58	1150	0
U17	853	49	876	49	816	42	780	46	895	0
Sub-Total	6749	452	6407	421	5799	369	5681	367	6404	0
TOTAL MINOR BOX	8,265	552	7,704	500	8,384	437	7,809	442	7,713	0
Box Lacrosse - Senior										
Women's Box Lacrosse	150	7	123	6	96	4	26	1	0	0
Masters	163	8			196	8	0	0	150	7
Junior B Tier 2	409	16	403	17	335	14	222	11	0	0
Junior B Tier 1	354	14	256	10	368	15	294	15	33	2
Junior A	186	8	182	8	186	8	180	8	18	1
Senior C	710	22	699	27	680	26	10	1	0	0
Senior B	130	5	142	5	145	5	70	2	0	0
Senior A	202	7	215	7	204	7	0	0	8	0
	2,304	87	2020	80	2,352	94	887	42	209	10
Field Lacrosse - Youth										
U5	0	0	76	6	99	8	59	4	17	1
U7	201	16	328	16	227	14	208	13	169	8
U9	419	25	396	20	242	15	364	16	459	23
U11	472	26	441	22	405	20	462	23	528	26
U13	539	31	493	25	476	24	504	25	575	29
U15	498	28	476	24	437	22	435	22	529	26
U17	387	22								
U19	138	7	227	14	346	17	347	17	342	17
Highschool	255	16	171	9	317	16	0	0	511	26
Sub-Total	2,961	171	2,608	136	2,549	136	2,379	120	3,130	156
Field Lacrosse - Girls Field										
Female U7	14									
Female U9	35									
Female U11	174									
Female U13	140									
Female U15	171									
Female U17	126									
Female U19	16									
Highschool	52									
Sub-Total	728	45	572	34	528	30	539	34	613	30
Field Lacrosse - Senior/Women's										
Senior Men's	188	8	207	9	213	11	0	0	232	12
Masters Field (Recreation)	144	8	158	8	144	8	145	8	119	6
Sub-Total Senior Men's	332	16	365	17	885	49	684	42	964	48
TOTAL FIELD LACROSSE	4,021	232	3,545	187	3,962	215	3,602	196	4,707	234
TOTAL REGISTRATION	14,590	871	13,269	767	14,698	746	12,298	680	12,629	244

2024 Senior Lacrosse Registration Statistics																								
Senior A	2024	2023	2022	2021	2020	2019	2018	2017	2016	2015	2014	2013	2012	2011	2010	2009	2008	2007	2006	2005	2004	2003		
Burnaby Lakers	25	35	31	-	-	31	28	27	25	30	25	28	29	30	31	29	26	30	25	28	25	28		
Coquitlam Adanacs	36	28	31	-	2	33	26	30	26	29	28	24	27	29	29	34	25	30	30	29	24	30		
Langley Thunder	29	41	26	-	-	27	27	27	25	26	24	33	32	29	27	32	31	27	32	25	24	28		
Maple Ridge Burrards	26	27	26	-	-	31	27	31	30	27	28	27	29	26	27	24	24	26	26	25	24	24		
Nanaimo Timbermen	28	27	27	-	-	24	26	26	25	25	28	25	25	29	32	31	33	26	25	22	0	0		
New West Salmonbellies	31	28	24	-	6	28	25	26	28	25	27	30	32	31	27	33	29	29	32	29	24	28		
Victoria Shamrocks	27	29	39	-	-	32	25	28	27	29	26	27	29	26	29	28	28	27	31	34	27	26		
Sub-Total	202	215	204	0	8	206	184	195	186	191	186	194	203	200	202	211	196	195	201	192	148	164		
Senior B																								
West Coast																								
Burnaby (Vancouver)	-	-	-	-	-	-	-	-	-	-	-	-	-	-	31	27	29	26	22	24	28	25		
Chilliwack	-	-	-	-	-	-	-	-	-	-	-	-	-	29	23	21	-	-	-	-	-	-		
Coquitlam	-	-	-	-	-	31	26	28	24	32	33	25	28	31	35	26	33	24	34	32	34	31		
Ladner Pioneers	27	26	30	35	-	29	33	31	30	28	27	27	30	23	32	26	31	24	31	25	35	29		
Langley	-	-	-	-	-	30	29	30	31	29	24	25	26	28	24	16	-	-	-	-	-	-		
Nanaimo Timbermen	26	26	-	-	-	30	29	33	31	29	35	31	35	29	29	29	32	29	29	30	28	29		
New Westminster (previously Royal City)	20	25	26	-	-	32	35	27	28	30	26	28	29	26	27	30	30	31	25	24	31	31		
North Shore Indians	30	35	30	35	-	-	-	-	34	23	29	29	34	29	33	22	20	25	27	27	29	29		
Poco Knights	-	-	-	-	-	-	-	-	-	-	-	-	-	-	-	-	-	-	-	-	-	-		
Poco Saints	-	-	32	-	-	-	-	-	-	-	-	-	-	-	-	-	-	-	-	-	-	-		
Port Moody	-	-	-	-	-	-	-	-	-	32	27	27	23	-	-	-	-	-	-	-	-	-		
Valley Rebels	-	-	-	-	17	28	27	25	28	29	25	27	28	31	26	28	28	24	28	24	23	23		
Victoria	27	30	27	-	-	32	32	25	29	-	-	-	-	-	-	-	-	-	-	-	-	-		
Sub-Total	130	142	145	70	0	201	212	201	232	231	230	217	232	223	265	223	203	187	192	190	209	197		
Senior C																								
West Central																								
Burnaby	-	-	29	-	-	29	28	28	25	28	25	9	-	-	-	-	-	-	-	-	-	-		
Coquitlam Cobras	-	-	-	-	-	26	27	27	28	29	25	26	28	28	27	32	-	-	-	-	-	-		
Ladner	28	28	34	-	-	31	28	24	24	32	26	22	25	25	25	20	-	-	-	-	-	-		
Langley	31	30	-	-	-	-	28	30	-	-	-	-	-	-	-	-	-	-	-	-	-	-		
Maple Ridge Attack	32	28	28	-	-	29	28	29	25	27	23	21	27	22	23	22	18	23	25	25	22	26		
Mission	30	32	31	-	-	28	28	29	26	-	-	-	-	-	-	-	-	-	-	-	-	-		
North Shore	35	30	30	-	-	30	29	31	28	35	-	-	-	-	-	30	24	21	30	27	0	0		
Poco Hitmen	27	28	28	-	-	26	31	24	25	26	28	30	29	29	34	31	24	26	28	16	26	28		
Port Moody	32	31	33	-	-	36	28	28	31	27	28	25	24	30	33	26	26	23	25	21	22	28		
Queensborough	31	29	29	-	-	30	-	-	-	-	-	-	-	-	-	-	-	-	-	-	-	-		
Richmond	25	26	27	-	-	25	25	28	24	26	20	22	-	-	-	-	-	-	-	-	-	-		
Tri City	30	29	28	-	-	-	-	-	-	-	-	-	-	-	-	-	-	-	-	-	-	-		
Vancouver Burrards	-	-	-	-	-	-	-	-	-	-	36	32	27	23	27	21	28	23	19	23	23	27		
West Vancouver	-	-	-	-	-	-	-	-	-	-	-	-	-	30	-	-	30	28	-	-	-	-		
Sub-Total	301	291	297	0	0	290	280	278	236	230	211	187	190	157	169	212	148	116	127	112	93	109		
Senior C																								
Vancouver Island																								
Cowichan Bears	-	-	-	-	-	-	-	-	-	-	-	-	-	-	-	-	-	-	-	-	-	9		
Cowichan River Rats	27	25	24	-	-	-	-	-	-	-	-	-	-	-	-	-	-	14	16	21	22	26		
Cowichan Valley	25	22	-	-	-	24	-	-	-	-	-	-	-	-	-	-	-	-	-	-	-	-		
Duncan Hitmen	-	-	-	-	-	-	-	-	-	-	-	-	-	-	-	-	-	-	-	-	12	7		
Esquimalt Buchaneers	-	-	-	-	-	-	-	-	11	16	17	-	-	-	20	18	21	19	15	16	16	30		
Ladysmith Attack	-	-	-	-	-	-	-	-	-	-	-	-	-	-	-	-	-	-	-	-	-	6		
Saanich Express	24	26	25	-	-	-	19	19	-	-	-	-	5	13	13	19	-	-	-	-	19	13		
Greater Victoria Firefighters	24	27	-	-	-	-	-	-	-	-	24	20	19	19	-	-	-	-	-	-	-	24		
Victoria Blazers	25	26	26	-	-	19	18	20	19	18	18	23	15	21	-	-	-	-	-	-	-	-		
Victoria Jokere	24	24	20	-	-	16	24	16	16	-	19	22	19	21	17	17	23	15	12	21	-	23		
Victoria Luckies	-	-	-	-	-	-	-	-	-	20	-	18	15	19	20	20	22	20	17	15	18	16		
Victoria Pylons	-	-	-	-	-	-	-	-	-	-	-	-	-	-	-	-	-	-	-	-	-	15		
Victoria Tugmen	24	-	-	-	-	12	26	25	11	22	14	17	16	20	18	21	19	20	12	18	12	10		
Westshore Aces	24	25	22	-	-	-	-	-	-	-	-	-	-	-	-	-	-	-	-	-	-	-		
Wsanec Arrows	-	23	24	-	-	16	22	21	-	-	-	-	-	-	-	-	-	-	-	12	11	25		
Sub-Total	197	198	141	0	0	87	90	80	76	76	92	100	89	113	88	95	85	88	72	91	114	176		
Prince George																								
Bandits	27	24	24	-	-	23	22	25	26	27	25	25	25	24	24	17	16	19	20	10	12	21		
Stylers	-	-	-	-	-	20	23	22	27	21	19	25	29	22	19	21	20	15	10	13	17	17		
Assault	26	25	26	-	-	24	-	20	21	26	21	18	23	22	21	18	14	12	13	15	12	20		
Devils	26	27	28	-	-	24	30	25	19	26	26	25	21	20	20	14	21	23	21	12	13	15		
Sub-Total	79	76	78	0	0	71	72	93	88	106	93	87	94	95	87	68	72	74	69	47	50	73		
Okanagan																								
Armstrong	29	24	29	-	-	28	26	27	28	27	26	26	24	25	25	26	22	26	20	25	27	24		
Kamloops	24	26	21	10	-	20	23	21	23	27	24	19	22	18	25	22	25	-	-	-	-	-		
Kelowna Raiders	25	25	24	-	-	27	14	25	23	20	24	24	25	24	28	25	27	24	27	24	16	18		
Princeton	-	-	18	-	-	-	-	-	-	-	-	-	-	-	-	-	-	-	-	-	-	-		
Vernon	30	19	23	-	-	20	-	-	-	-	-	-	23	23	25	22	28	24	27	25	22	25		
Sub-Total	108	94	115	10	0	95	63	73	74	74	74	69	94	90	103	95	102	74	74	74	65	67		
Northern B.C.																								
Kitimat Alcan Pioneers	-	-	-	-	-	-	-	-	-	-	-	-	-	-	-	-	-	10	16	13	16	17		
Mackenzie Lumberjacks	25	22	26	-	-	19	16	22	24	-	-	-	25	20	12	-	-	-	-	-	-	-		
Quesnel	-	18	23	-	-	23	27	22	24	17	10	18	24	-	-	-	-	-	-	-	-	-		
Sub-Total	25	40	49	0	0	42	43	44	48	17	10	18	49	20	12	0	0	10	16	13	16	17		
Junior A																								
Burnaby Lakers	25	20	26	25	-	24	21	29	23	29	34	23	24	31	31	27	25	23	28	26	28	30		
Coquitlam Adanacs	24	17	26	21	1	28	25	27	25	27	27	31	22	30	32	22	22	23	21	24	27	26		
Delta Islanders	21	23	21	25	16	22	23	23	26	27	27	22	26	28	24	25	21	21	24	25	22	25		
Langley Thunder	21	25	25	23	1	25	18	27	27	23	25	29	27	29	23	27	27	23	27	26	25	25		

Pt. Coquitlam			-	-	-	-	26	21	-	23	21	24	23	25	21	26	25	24	20	34	21	-
Pt. Coquitlam Gold			-	-	-	-	-	-	-	-	-	-	-	-	22	-	-	-	19	12	21	16
Pt. Moody			-	-	-	-	-	-	21	23	-	21	24	15	29	24	26	26	-	-	-	-
Richmond			-	-	-	-	-	-	-	-	-	-	23	22	24	27	23	19	19	-	-	-
Ridge Meadows			-	-	-	-	24	24	21	26	24	26	25	25	25	24	27	25	31	28	25	18
Semiahmoo			-	-	-	-	-	-	-	-	-	-	-	20	25	21	-	-	18	22	-	-
Surrey			-	-	-	-	-	-	-	-	18	-	15	21	25	25	25	25	10	-	-	-
Vancouver			-	-	-	-	-	-	-	-	-	-	-	-	-	-	-	22	21	-	-	21
Sub-Total			0	0	0	0	129	128	145	161	194	242	274	302	336	308	308	283	297	256	197	161
Junior B T3 - Island (Prev Island IntB)																						
Campbell River			-	-	-	-	-	-	-	10	-	-	-	-	-	-	-	30	20	-	-	-
Comox Valley			-	-	-	-	-	-	-	-	15	-	-	-	-	25	19	-	4	19	-	-
Cowichan Valley #1			-	-	-	-	-	-	22	24	-	-	-	21	22	24	20	24	12	-	-	-
Cowichan Valley #2			-	-	-	-	-	-	-	-	-	-	-	-	21	-	20	-	-	-	-	-
Juan de Fuca			-	-	-	11	-	19	25	19	25	23	28	26	26	16	23	19	20	-	-	-
Nanaimo			-	-	-	-	-	-	-	-	22	-	22	24	-	-	-	-	-	-	-	-
Oceanside			-	-	-	24	-	17	20	-	-	24	22	25	21	-	-	-	-	-	-	-
Peninsula			-	-	-	-	-	8	-	-	-	22	18	17	28	27	22	25	19	-	-	-
Port Alberni			-	-	-	-	-	-	-	-	-	-	19	-	-	-	-	-	-	-	-	-
Powell River			-	-	-	-	-	-	-	-	-	-	18	16	27	22	-	-	-	-	-	-
Saanich			-	-	-	-	-	18	22	22	24	27	19	25	28	26	24	24	26	-	-	-
Victoria-Esquamalt			-	-	-	-	-	-	-	-	-	-	-	21	17	-	-	22	22	-	-	-
Westshore			-	-	-	-	-	-	-	-	-	-	-	-	-	-	-	-	-	-	-	-
Sub-Total			0	0	0	0	35	0	54	97	75	86	115	127	175	190	140	128	144	123	19	0
Juvenile																						
Houston			-	-	-	-	-	-	-	-	-	-	-	-	-	-	-	7	-	-	-	-
Kitimat			-	-	-	-	-	-	-	-	-	-	-	-	-	-	-	7	13	-	-	-
Salmon Arm			-	-	-	-	-	-	-	-	-	-	-	-	-	-	-	20	-	-	-	-
Terrace			-	-	-	-	-	-	-	-	-	-	-	-	-	-	30	31	16	-	-	-
Sub-Total			0	0	0	0	0	0	0	0	0	0	0	0	0	0	0	30	65	29	0	0
	2024	2023	2022	2021	2020	2019	2018	2017	2016	2015	2014	2013	2012	2011	2010	2009	2008	2007	2006	2005	2004	2003
Intermediate B - Cariboo																						
MacKenzie Spartans			-	-	-	-	-	-	-	-	12	-	-	-	-	-	-	-	-	-	-	-
Prince George Posse			-	-	-	-	-	-	-	-	17	-	-	-	-	-	-	-	-	-	-	-
Quesnel Wildfire			-	-	-	-	-	-	-	-	18	-	-	-	-	-	-	-	-	-	-	-
Sub-Total			0	0	0	0	0	0	0	0	47											
Masters																						
16 Teams @ 25/team			-	-	0	330	400	400	400	400	400	400	400	400	400	400	400	400	400	400	400	342
Justice League			-	-	-	-	-	-	-	5	5	5	14	28	28	-	-	-	-	-	-	-
Lower Mainland	163	164	196	-	150	234	156	125	125	125	125	125	125	89	-	-	-	-	-	-	-	-
Sub-Total Masters	163	164	196	0	150	564	556	525	525	525	530	530	530	503	428	428	400	400	400	400	400	342
Women's Box Lacrosse																						
Burnaby	15	23	23	26	-	18	21	24	25	21	21	21	21	19	26	13	13	16	22	19	14	-
Coquitlam	20	22	-	-	-	16	21	15	20	23	23	23	23	20	24	-	-	16	-	20	26	-
Kamloops			-	-	-	-	-	23	23	-	-	-	-	-	-	-	-	-	-	-	-	-
New Westminster	22	19	24	-	24	21	25	19	20	20	20	20	20	18	21	22	22	-	-	-	-	-
North Shore			-	-	-	-	-	-	20	20	20	20	20	23	22	15	15	15	21	25	22	-
Pt. Coquitlam			24	-	24	24	13	14	-	-	-	-	14	-	-	-	-	-	-	-	-	-
Pt. Moody	24	25	25	-	18	21	21	19	-	-	-	-	-	-	-	-	-	-	-	-	-	-
Richmond-Delta			-	-	-	-	-	-	21	21	21	21	19	21	14	14	19	20	11	0	-	-
Ridge Meadows	24	23	-	-	-	-	-	-	-	-	-	-	-	15	23	18	18	-	-	-	-	-
Victoria/Peninsula	19	11	-	-	-	24	20	21	25	20	20	20	20	25	17	18	18	-	-	-	-	-
Nanaimo	26		-	-	-	-	-	-	-	-	-	-	-	-	-	-	-	20	-	-	14	-
Team #6			-	-	-	-	-	-	-	-	-	-	-	-	-	-	-	-	-	-	-	12
Sub-Total Women's	150	123	96	26	0	124	128	142	145	125	125	125	125	153	154	100	100	86	63	75	88	
TOTAL SENIORS	####	2,278	2,352	887	209	2,637	2,642	2,686	2,675	2,707	2,762	2,775	3,001	2,995	3,028	3,014	2,783	2,545	2,499	2,444	2,335	2,156

FIELD LACROSSE REGISTRATION	2024	2023	2022	2021	2020	2019	2018	2017	2016	2015	2014	2013	2012	2011	2010
MASTERS RECREATION															
Masters - East											-	-	-	-	-
New West - Red											-	-	-	-	-
New West - White											-	-	-	-	-
Richmond											-	-	-	-	-
Royal City											-	-	-	-	-
South Fraser											-	-	-	-	-
Tri Cities									147		114	108	116	116	117
TOTAL MASTERS	0	0	0	0	0	0	0	0	147	0	114	108	116	116	117
SENIOR MEN'S FIELD	2024	2023	2022	2021	2020	2019	2018	2017	2016	2015	2014	2013	2012	2011	2010
Abbotsford		17	26		20	29	26	29	28	23	9	21	24	28	29
Adanacs			28		25	18	32	26	30						
Burnaby										-	0	-	22	-	-
Coquitlam Beerhunters		22	28		28		20	31	25	24	17	32	18	51	51
Cowichan										-	-	-	-	-	-
Kamloops										-	-	-	-	-	14
Ladner Pioneers		27	30		12	15	17	24	29	14	9	23	28	27	30
Nanaimo										19	-	-	-	-	-
New Westminster		25	29		22		29	28	24	28	22	24	26	-	-
North Shore										-	-	-	-	-	-
Pt. Coquitlam										-	-	-	24	31	26
Richmond										-	-	-	-	-	-
Ridge						17	25	24	24						
South Fraser										21	27	23	22	18	26
Tri-City John B										-	-	20	18	25	28
Tri Cities Burrards		25								-	-	-	-	-	-
UBC		20	15		11	16	20	23	26	27	-	-	-	-	-
Vancouver		10	30			22	26	28	23	23	19	20	19	24	24
Victoria		26								-	1	15	13	26	-
Whalley		19	27		29	26	26	26	24						
CWFLL - spares	188	8								1	4				
Unassigned		8													
TOTAL MEN'S FIELD	188	207	213	0	147	143	221	239	233	180	108	178	214	230	228

Shuswap															
Sunshine Coast															
Surrey															
Valley															
Vancouver	13														
Victoria	16														
Sub-Total	387														
U15	2024	2023	2022	2021	2020	2019	2018	2017	2016	2015	2014	2013	2012	2011	2010
Adanacs	33	44	36	33	39	38	52	55	54	67	70	62	53	53	39
Burnaby	17	27	19	16	20	18	19	20	17	13	22	20	19	42	37
Chilliwack	19	24	20	11	19	17					-	-	-	-	-
Cranbrook	21	10			17	11	20	9							
Delta	20	25	25	23	25	21	21	36	38	42	40	39	43	49	23
Kamloops	20	21	16		17	21	20	13	22	16	21	20	17	17	1
Kelowna	17	23	30		15	12	13	19	15	24	24	20	15	1	1
Kitimat									-		-	-	-	-	14
Langley	36	40	29	23	34	23	18	37	34	36	37	32	29	30	29
Mid Island			6		2		17	23	24	23	36	19	15	20	2
Mission	22	17	15	19	16		22	19	29	24	24	16	18	15	17
Nanaimo	24	19			25	25	25	36	24	24	18	23	24	18	29
New Westminster	36	14	21	20	17	23	19	33	42	20	21	37	36	40	40
Nicola Valley					6										
North Island	12				18	20			32	22	13	23	24	14	17
North Okanagan	1	3			19	5	17	12	20		19	25	20	19	19
North Shore			12	22	21	18	19	20	19	19	22	-	19	20	32
Oceanside	6		19		17	17				-	16	-	11	-	23
Pacific Rim	48	39	35		36	43	35	48	39	24	33	37	40	45	39
Penticton	16	22				1	13	18	18	2	0	-	12		
Port Coquitlam	37	19	17	19	20	16	24	23	25	17	40	45	42	26	24
Prince George							14			16	4	2	15	7	8
Richmond	10	12	12	5	2	8		17	23	16	6	14	21	22	19
Ridge Meadows	38	37	49	46	40	46	60	54	42	36	34	18	18	36	21
Shuswap						17			17						
Sunshine Coast								4		2	4				
Surrey	16	25	31	17	24	33	19	20	21	26	22	41	38	19	18
Valley		8		19	15	18	23		16	-	-	-	19	24	18
Vancouver	9	24	21	17	19	16	24	20	15	24	19	20	-	-	-
Victoria	40	23	24		43	45	36	41	43	41	36	20	37	39	29
Sub-Total	498	476	437	290	526	512	530	577	629	534	581	533	585	556	499
U13	2024	2023	2022	2021	2020	2019	2018	2017	2016	2015	2014	2013	2012	2011	2010
Adanacs	49	37	54	44	41	38	41	48	46	55	55	82	85	64	53
Burnaby	20	19	17	20	19	15	22	21	20	19	16	16	29	16	36
Chilliwack	20	20	24	30	19	14	14	14			-	-	-	-	-
Cranbrook	15	19			13	17	22	12							
Delta	41	20	17	19	25	32	21	30	31	44	26	49	36	23	31
Kamloops	17	18	13		24	19	16	21	17	24	12	22	31	28	17
Kelowna	12	19	31		22	13	16	17	19	23	20	23	24	14	9
Langley	38	24	44	42	31	32	30	27	21	22	37	41	34	35	34
Mid Island			1		1		6		14	19	31	25	25	16	14
Mission	28	24	18	19	23	23	17	20	25	36	30	21	21	20	14
Nanaimo	21	26	22		23	42	39	42	27	25	32	23	-	19	23
New Westminster	15	35	18	19	39	39	21	36	30	40	29	20	28	46	41
Nicola Valley					2		9								
North Island	14	14	18		14			19	22	22	24	18	8	16	19
North Okanagan					17	17	19	16			22	19	25	27	17
North Shore	19	17		1	20	16	19	18	20	-	14	24	22	-	-
Oceanside			4		12		25		10		15	19	20	16	-
Pacific Rim	51	45	32		26	37	49	42	45	62	29	44	40	37	49
Penticton	20	17	1		18	16		0	18	17	17	2	4		

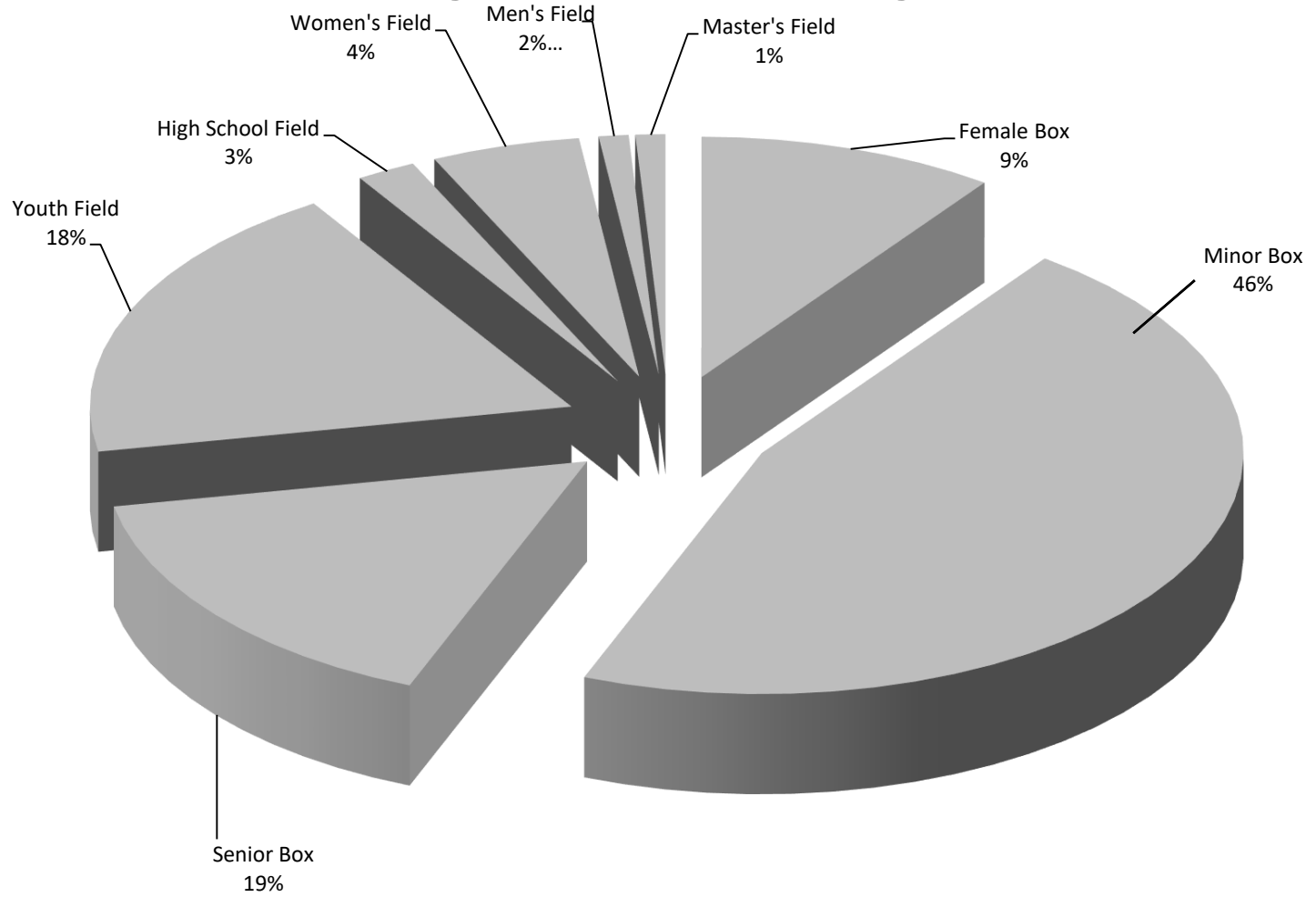
Port Coquitlam	34	17	29	25	27	24	19	20	28	23	18	29	34	39	40
Prince George										4	13	15	11	22	12
Richmond		9	11	14	15	3		18	-	18	15	22	16	23	21
Ridge Meadows	52	33	40	55	61	52	49	63	60	36	31	39	36	20	19
Shuswap							14								
Surrey	16	21	22	29	23	37	39	29	24	33	20	22	42	40	47
Sunshine Coast										4	3				
Valley	17	10	13	14	17	23	15	16	14	-	-	17	20	15	19
Vancouver		10	13	17	16	20	23	24	25	21	16	19	15	-	-
Victoria	40	35	34		24	43	45	47	40	43	42	45	32	39	46
Sub-Total	539	489	476	348	572	572	590	600	556	590	567	656	638	575	561
U11	2024	2023	2022	2021	2020	2019	2018	2017	2016	2015	2014	2013	2012	2011	2010
Adanacs	44	44	42	50	59	44	35	43	37	44	59	46	58	68	64
Burnaby	32	18	20	20	17	21	25	19	18	25	19	18	15	17	17
Chilliwack	18	17	27	31	31	17	20	17			-	-	-	-	-
Cranbrook	8	11			9	17	9	18							
Delta	36	36	32	18	24	30	29	22	30	31	30	22	23	30	29
Kamloops	26	14	14		16	18	18	15	16	23	14	9	5	16	13
Kelowna	16	15	23		23	16	22	21	21	23	20	21	15	20	13
Langley	30	32	30	34	52	49	33	29	28	19	37	25	30	30	30
Mid Island			1		1		15		7	19	19	12	16	16	3
Mission	27	23	37	33	22	1	15	20	17	17	18	22	20	18	15
Nanaimo	20	23	19		25	27	18	30	23	25	25	-	-	-	8
New Westminster	17	7	13	21	13	22	34	33	34	28	34	35	28	19	30
Nicola Valley							8								
North Island		2			0				0	19	24	22	4	-	14
North Okanagan		1			9		16	14			20	9	15	15	22
North Shore		15	25	14			18	20	-	23	-	-	-	23	-
Oceanside					4				4	-	-	16	15	14	-
Pacific Rim	24	18	19		22	22	27	16	22	23	35	32	14	30	25
Penticton	12	17	10		17	18	17	14	8	14	-	9	5		
Port Coquitlam	50	31	18	31	37	32	24	26	21	34	20	23	25	20	21
Prince George										14	14	7	13		
Richmond		8	5	14	13	12	17	0	16	15	17	-	17	14	17
Ridge Meadows	61	46	36	31	53	60	59	46	49	57	35	34	28	36	35
Shuswap									18						
Surrey	19	1		16	24	18	23	49	32	34	41	23	15	35	29
Sunshine Coast								5		3	2				
Valley	0	11			15	19	16	20	14		-	12	16	18	15
Vancouver		23	8	9	8	25	25	18	19	20	14	17	17	18	-
Victoria	32	28	26		35	18	25	38	39	40	37	39	48	31	31
Sub-Total	472	441	405	322	529	486	548	533	473	550	534	453	442	488	431

U9	2024	2023	2022	2021	2020	2019	2018	2017	2016	2015	2014	2013	2012	2011	2010
Adanacs	16	32	29	42	49	32	39	32	37	47	40	42	42	39	38
Burnaby	31	28	20	10	19	16	18	17	15	21	16	22	21	21	14
Chilliwack	29	14	14	16	19	12	18	18							
Cranbrook	3	1			3	9	23	3							
Delta	21	21	21	24	22	27	34	29	27	30	29	18	22	18	-
Kamloops	13	25	5		9	18	16	14	17	22	16	13	7	11	5
Kelowna	7	18			17	22			6	20	12	-	-	-	6
Langley	37	27	14	30	28	38	50	37	25	18	-	15	15	18	12
Mid Island					1		8		0		-	6	6	14	18
Mission	26	23	19	25	39	23	13		19	18	-	-	15	17	18
Nanaimo	36	24	16		31	18	16	20	25	16	15	21	6	-	6
New Westminster	16	13	19	10	14	18	11	18	33	32	30	29	36	32	30
Nicola Valley							1								
North Island		7			15				1		-	9	12	-	-
North Okanagan	3	3			3		9	12			7	5	6	2	10
North Shore				9	23	20			-	-	15	-	22	-	14
Oceanside											-	-	4	4	-
Pacific Rim	11	19			23	22	26	15	16	25	15	23	-	3	3
Penticton	10	5	7		6	8	6	9	4	7	12	3			
Pt. Coquitlam	42	33	20	26	26	15	20	23	26	20	18	14	21	16	20
Prince George										-	-	6	1		
Richmond				5		18	18	19	-	19	15	4	-	15	21
Ridge Meadows	56	47	26	40	43	29	45	58	52	46	46	39	39	32	20
Shuswap					1										
Surrey	14	15		11	24	21	20	17	32	21	20	19	20	19	14
Sunshine Coast										4	1				
Valley	20	4		11	13		13	18	-		19	17	-	14	5
Vancouver			2	6		5	12	16	17	23	13	-	-	-	-
Victoria	28	37	30		32	39	38	31	36	36	33	24	30	23	26
Sub-Total	419	396	242	265	460	410	454	406	388	425	372	329	325	298	280
U7	2024	2023	2022	2021	2020	2019	2018	2017	2016	2015	2014	2013	2012	2011	2010
Adanacs	11	13	18	21	26	38	21	25	19	37	29	39	28	29	24
Burnaby	9	14	11	11	11				8	14	-	20	12	12	22
Chilliwack		23	18	11	14	18		10			-	-	-	-	-
Cranbrook		6													
Delta		21	21	17	15	15	22	22	20	24	22	28	27	10	14
Kamloops	5	12	15		10			2	0		-	6	14	6	7
Kelowna	3		7						0		-	3	-	1	-
Langley	26	26	28	22	17	23	13	23	20	20	12	-	-	8	13
Mid Island							1		0		-	4	5	-	-
Mission	14	29	23	25	22	11	13	13	-	14	18	11	-	-	12
Nanaimo	25	37	6						0	22	20	-	18	-	-
New Westminster	16	17	0	0			12	9	12	32	28	42	24	15	25
North Island									0		3	3	1	-	-
North Okanagan	2	7			1	1	7	3			-	-	-	2	-
North Shore									-	-	-	-	-	16	-
Oceanside											-	-	-	-	-
Pacific Rim	7	7							1	20	3	9	16	-	14
Penticton	5	4			5	7	7	2		2					
Port Coquitlam	13	16	14	0	17	17	21	22	16	22	18	14	21	-	-
Prince George										-	0	2	1		
Richmond			3	4				0		2	15	18	-	3	10
Ridge Meadows	41	47	36	21	27	30	42	36	42	41	29	19	39	39	24
Shuswap					4										
Surrey	6	15		9		14	18	17	15	17	11	16	20	-	14
Sunshine Coast										2	2				
Valley	6	12	6				11	14	14		0	-	-	-	14

HIGH SCHOOL FIELD	2024	2023	2022	2021	2020	2019	2018	2017	2016	2015	2014	2013	2012	2011	2010
Brookwood							16								
Centennial (Coquitlam)										45	45	45	45	25	
Charles Best (Coquitlam)										43	43	43	43	39	
Claremont (Saanich)										87	87	87	87	26	
Delta										25	25	25	25	35	
Heritage Woods (Pt. Moody)										40	40	40	40	-	
Holy Cross (Surrey)										25	25	25	25	-	
Langley										14	14	14	14	-	
Mission							34								
New Westminster										41	41	41	41	-	
Pitt Meadows										21	21	21	21	18	
Port Moody										16	16	16	16	-	
Riverside (Pt. Coquitlam)										20	20	20	20	-	
St. Thomas Moore (Burnaby)							21			20	20	20	20	-	
South Delta										16	16	16	16	-	
Terry Fox (Pt. Coquitlam)										43	43	43	43	32	
Vancouver College										40	40	40	40	-	
Victoria										-	-	-	-	47	
Sub-Total	0	0	0	0	0	0	71	0	0	496	496	496	496	222	
TOTAL YOUTH FIELD	2654	2407	2133	1626	2598	2536	2834	2779	3014	3350	3298	3064	2985	2608	2246
WOMEN'S FIELD	2024	2023	2022	2021	2020	2019	2018	2017	2016	2015	2014	2013	2012	2011	2010
LOWER MAINLAND															
Senior															
Vancouver											14	14	3	23	-
U19 Female Field															
Adanacs	1	22	20	16	17			7		18	17	-	16	16	-
Burnaby					17						-	18	-	19	9
Delta						1		1							
Langley				10		15	14	2		18	14	-	19	8	14
Mission					18	2									
New Westminister		12	16	9		13	13	7	9	16	17	17	18	14	14
Port Coquitlam	2			9		14	16	2	12		-	-	-	-	13
Ridge Meadows		17		16				8	10		-	14	-	-	-
Surrey		16	18	7	15	17		1							
Sub-Total	3	67	54	67	67	62	43	28	31	52	48	63	56	80	50
U17 Female Field															
Coquitlam	32														
Langley	19														
New Westminister	23														
Port Coquitlam	18														
Ridge Meadows	19														
Surrey															
Sub-Total	111														
U15 Female Field															
Adanacs	29	47	55	54	39	35	34	31	32	16	20	18	22	21	20
Burnaby	17	21	20			19	18	26	18	15	16	19	-	-	15
Delta						1					-	-	-	15	-
Langley		16	18	18	21	16	16	17	19	19	19	18	28	15	15
Mission	21	17		15	19	19	18								
New Westminister	18	30	28	39	32	23	14	21	21	21	25	23	26	30	20
Port Coquitlam		15	18	18	15	20	18	20	21	25	14	15	21	17	12
Richmond			34								-	6	-	-	-
Ridge Meadows	36	41		20	29	31	30	23	16	17	19	18	-	-	-
Surrey	18	17	30	40	36	20	32	21							
Sub-Total	139	204	203	204	191	184	180	159	127	113	113	117	97	98	82
U13 Female Field															
Adanacs	16	19	22	18	36	37	16	32	30	26	21	19	12	30	21

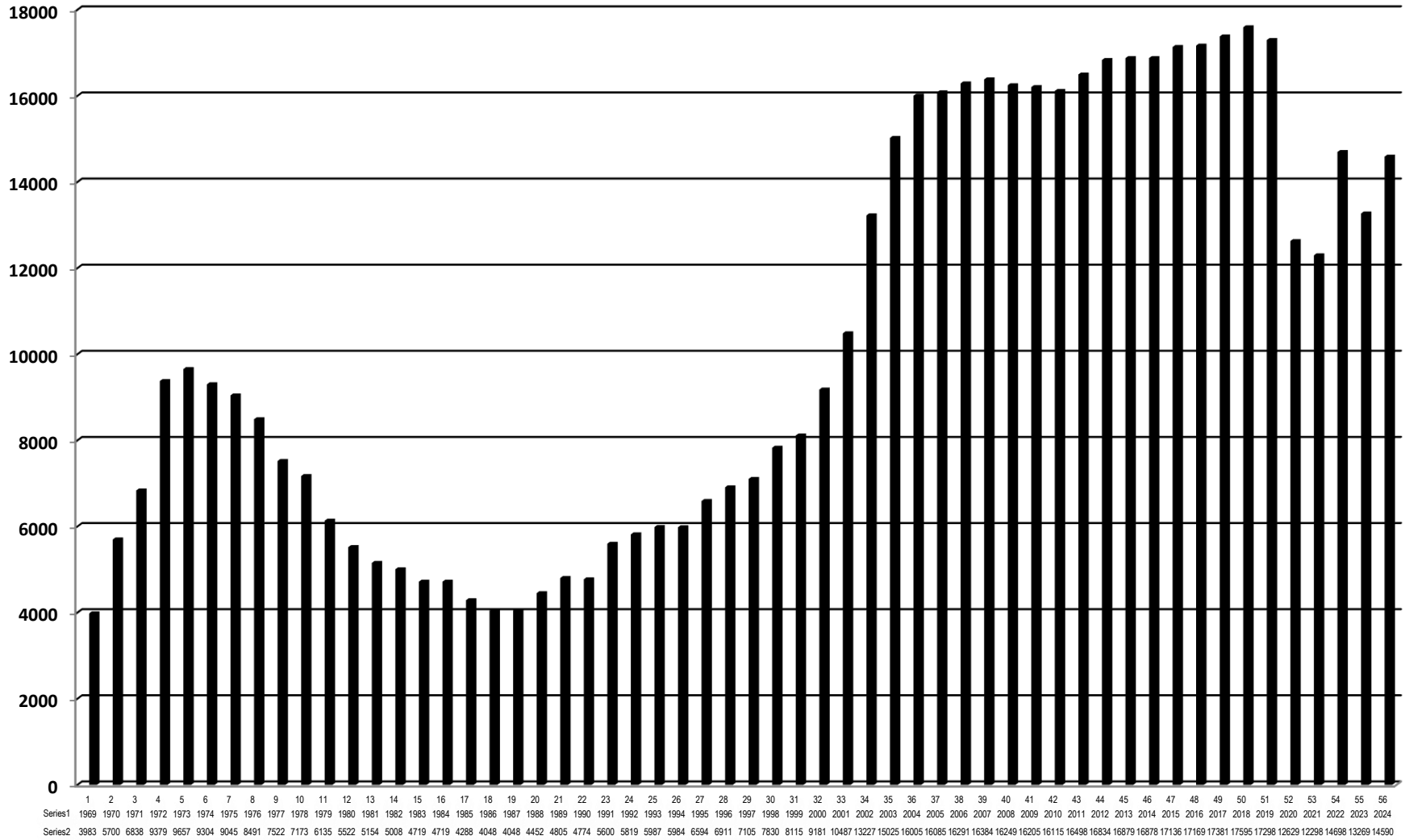
Delta		2	6												
Kamloops		5	3												
Langley		11	11			5									
Mission		9	16	15	7	4									
New West			6	7											
North Okanagan		3													
Port Coquitlam		3	5												
Surrey		10	8												
Valley		4	6												
Victoria		16	10												
Sub-Total	0	76	99	36	17	16									
TOTAL WOMEN'S FIELD	676	648	627	481	582	563	457	346	309	265	318	419	416	374	346
TOTAL FIELD REGISTRATION	3518	3262	2973	2107	3327	3242	3512	3364	3703	3795	3838	3769	3731	3328	2937

2024 Registration Percentages



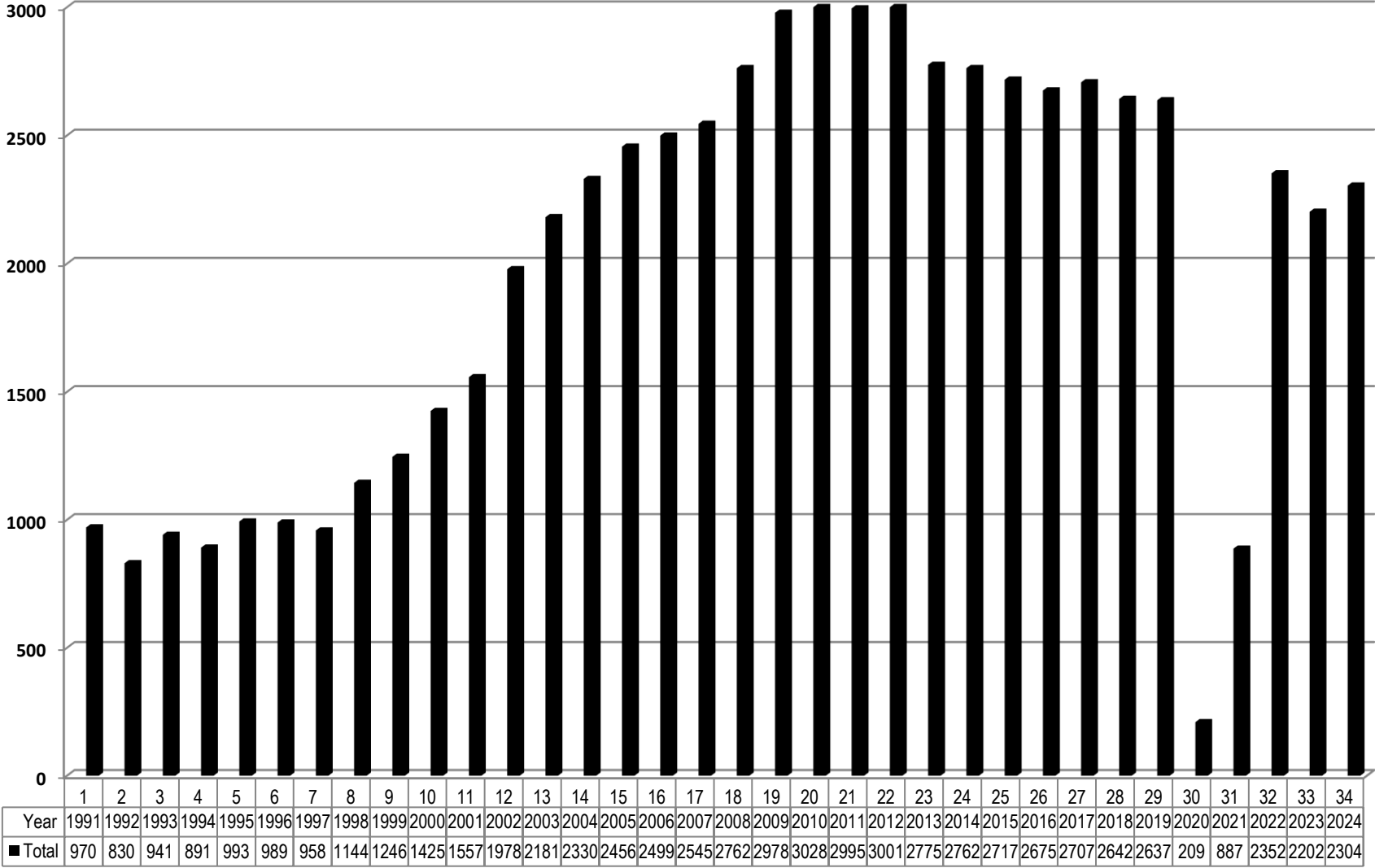
Total Lacrosse Statistics

56 Years



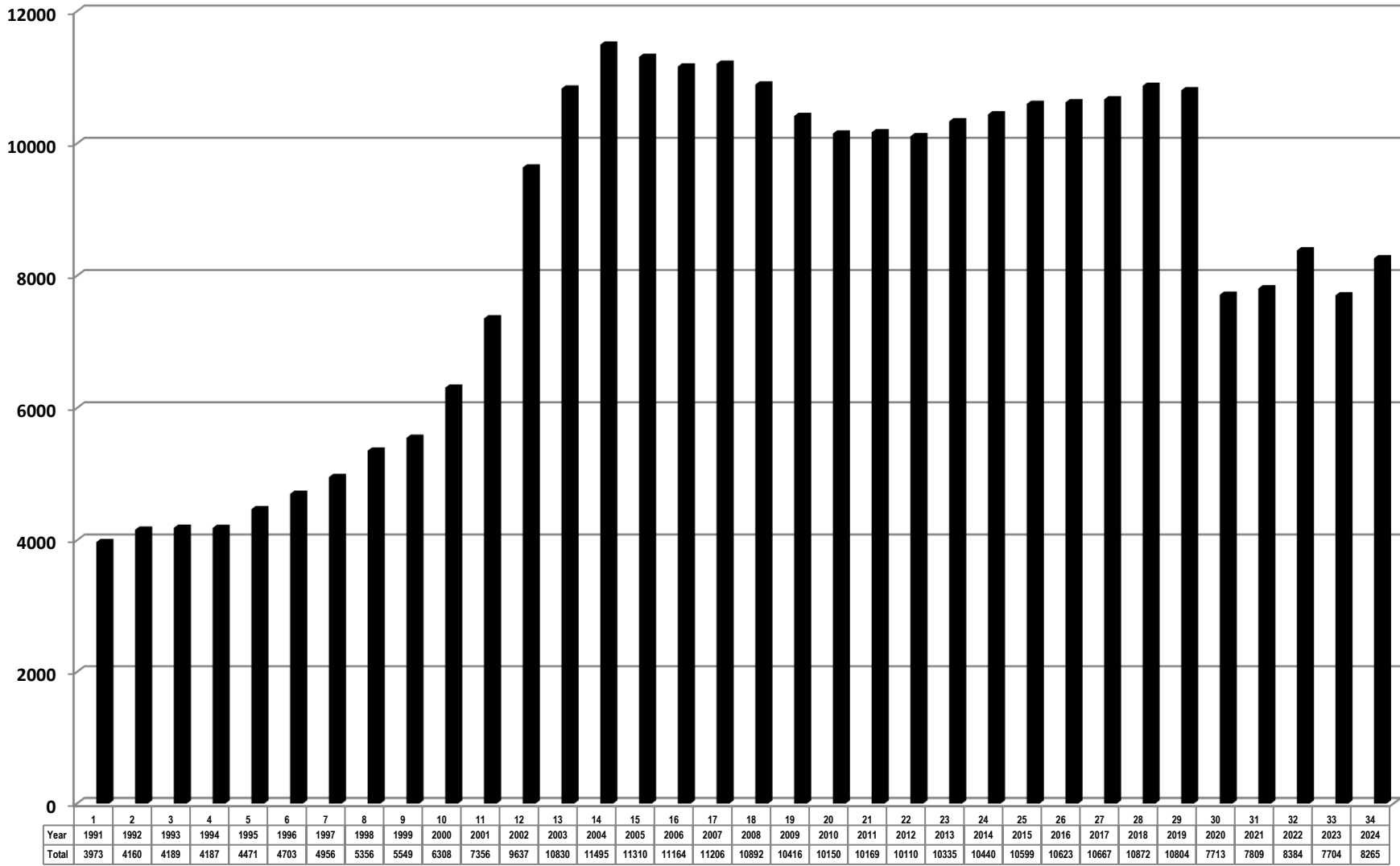
Senior Registration Statistics

34 Years



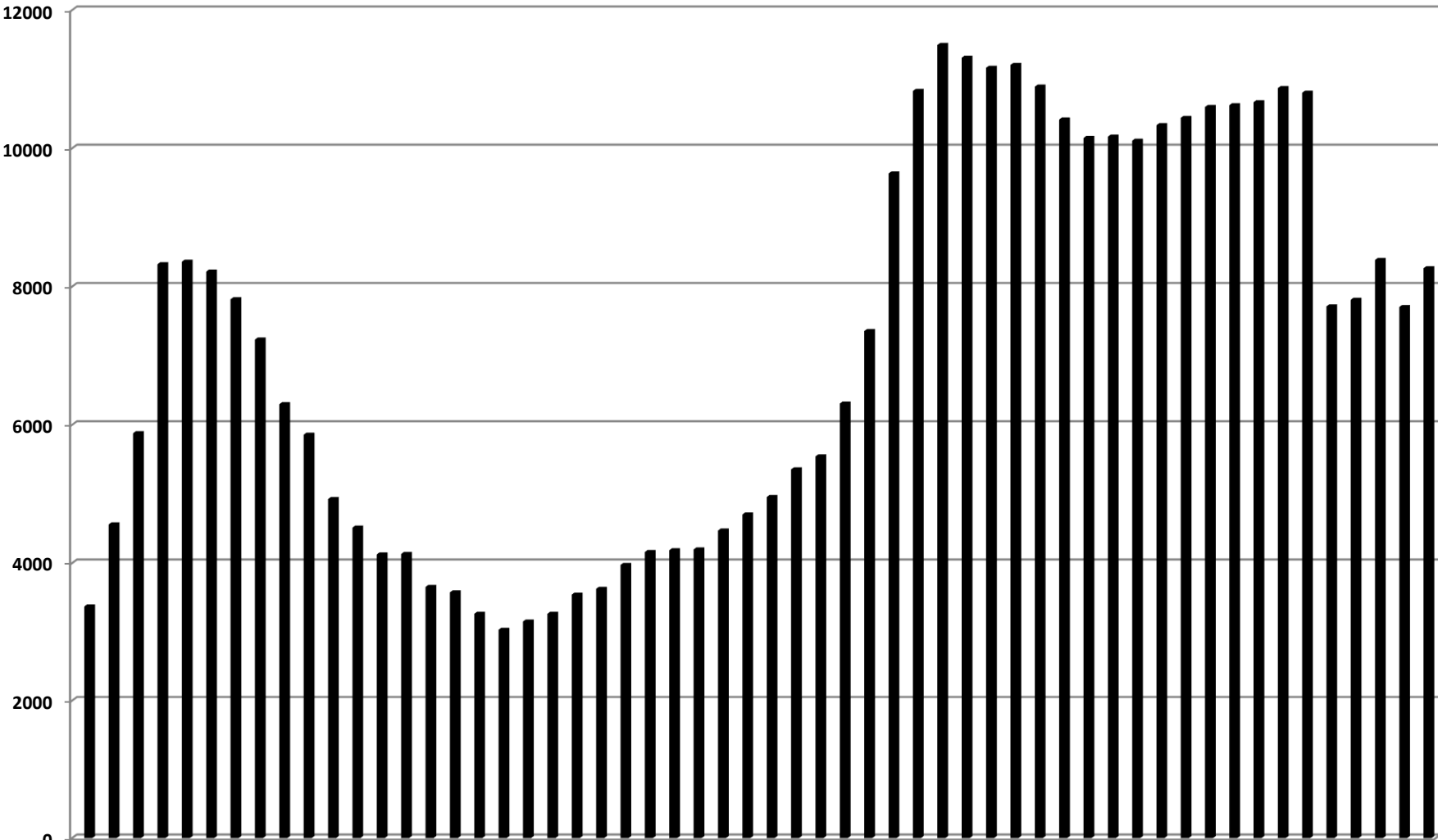
Minor Registration Statistics

34 Years



Minor Registration Statistics

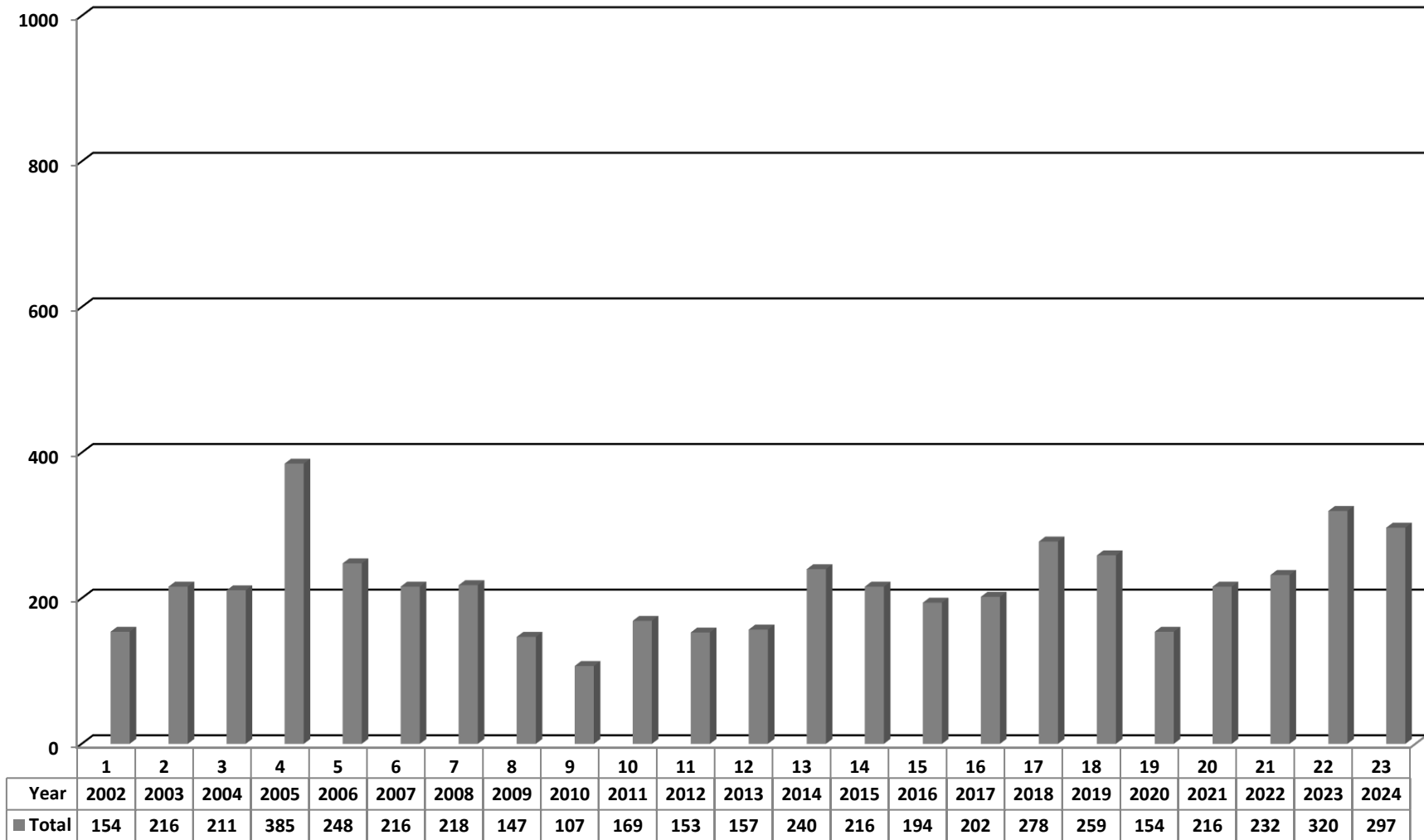
56 Years



Year	1969	1970	1971	1972	1973	1974	1975	1976	1977	1978	1979	1980	1981	1982	1983	1984	1985	1986	1987	1988	1989	1990	1991	1992	1993	1994	1995	1996	1997	1998	1999	2000	2001	2002	2003	2004	2005	2006	2007	2008	2009	2010	2011	2012	2013	2014	2015	2016	2017	2018	2019	2020	2021	2022	2023	2024
Total	3370	4560	5878	8323	8360	8216	7817	7234	6299	5857	4926	4513	4125	4132	3653	3574	3263	3030	3150	3263	3541	3626	3973	4160	4186	4197	4471	4703	4956	5356	5543	6308	7356	9637	10830	11495	11310	11164	11206	10892	10416	10150	10169	10110	10335	10440	10599	10623	10667	10872	10804	7713	7809	8384	7704	8265

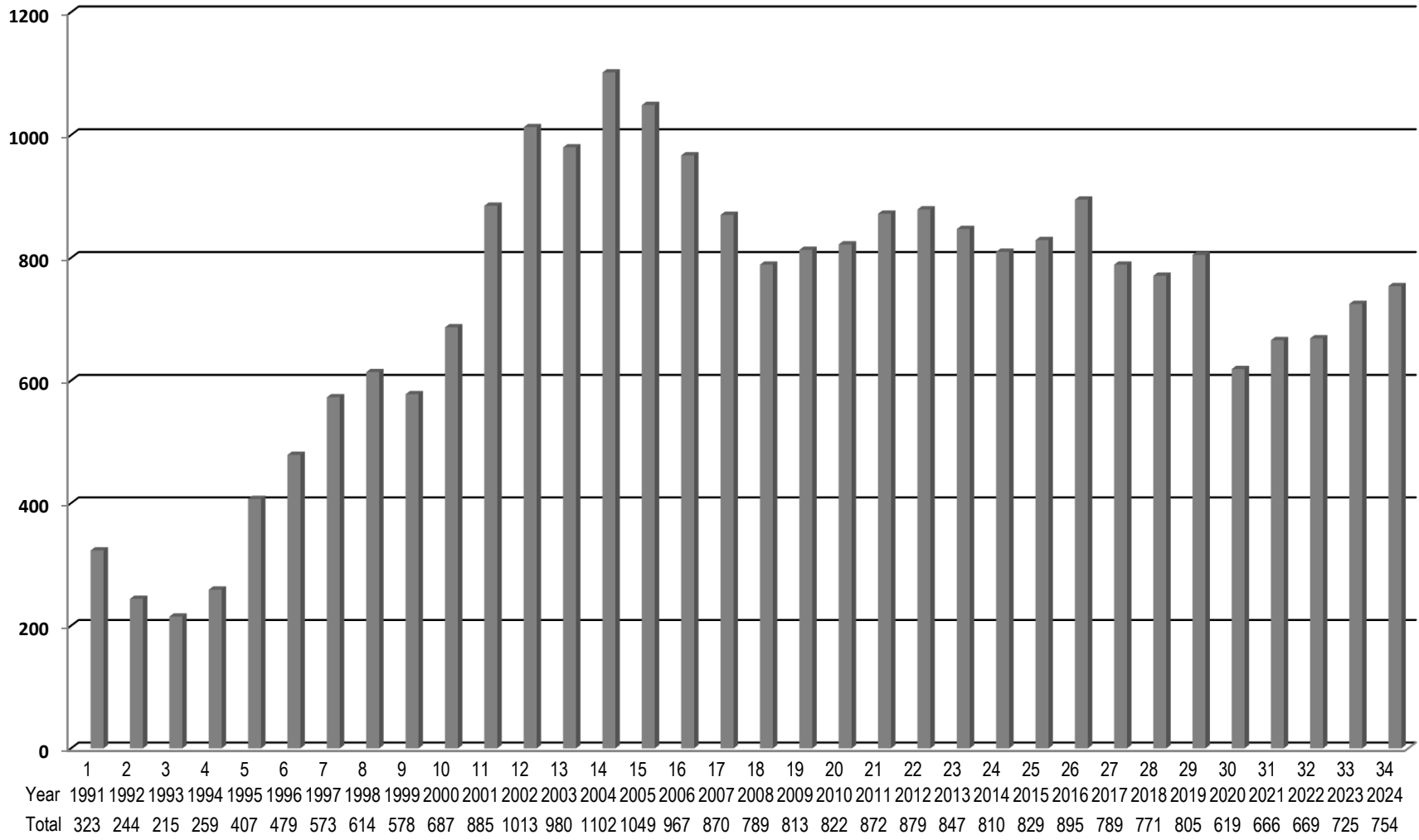
Minor Registration - Zone 1

23 Years



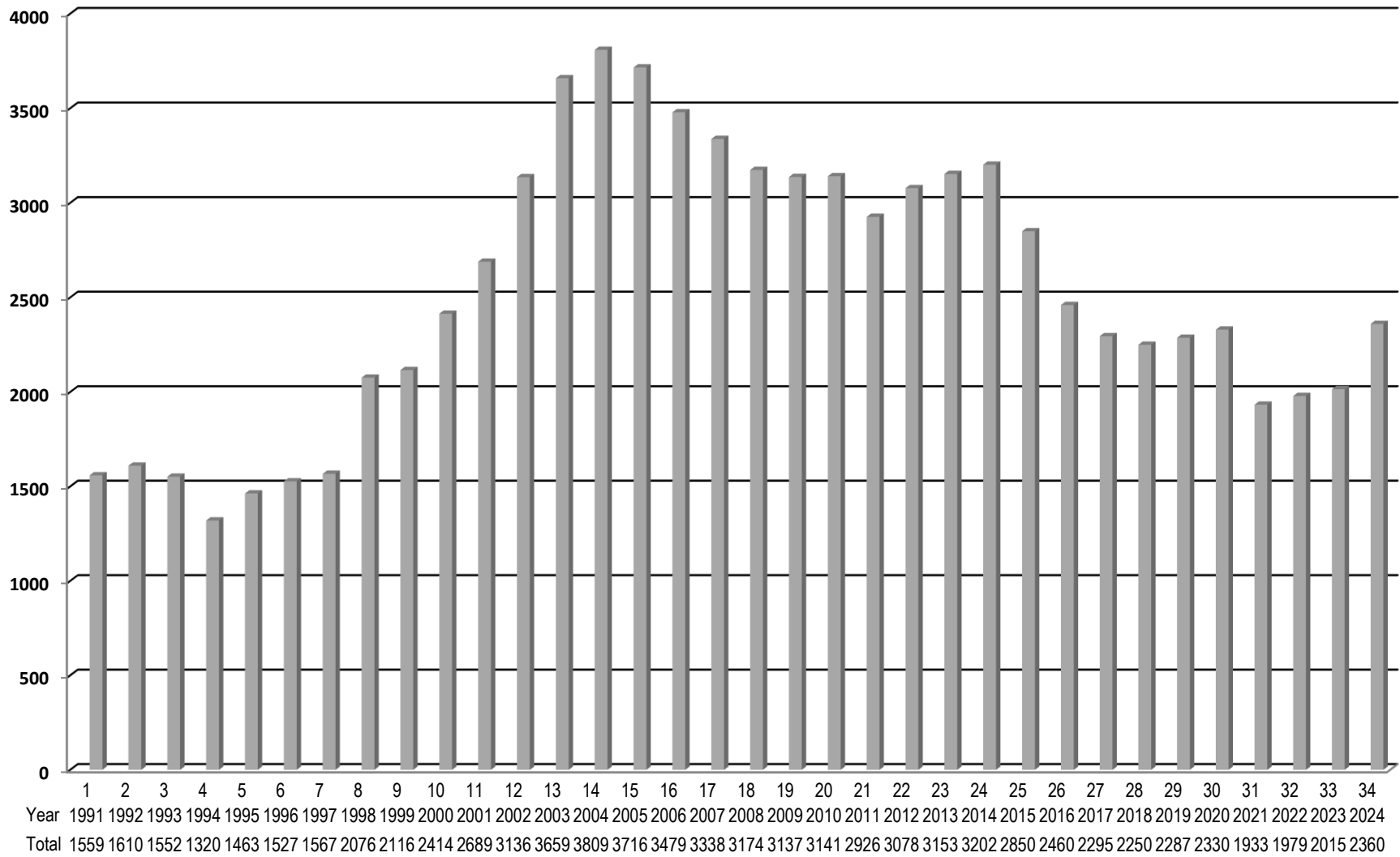
Minor Registration - Zone 2

34 Years



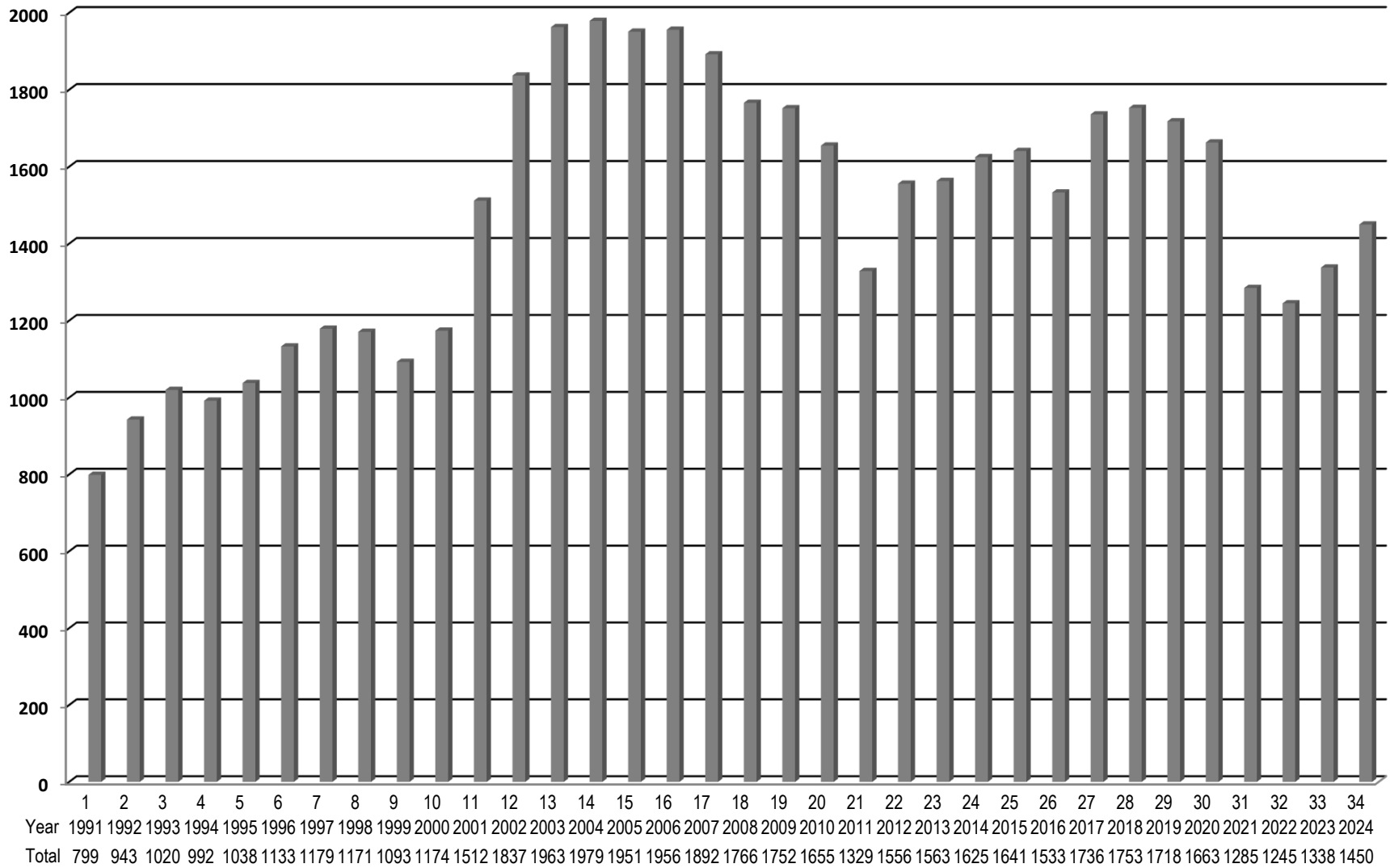
Minor Registration - Zone 3

34 Years



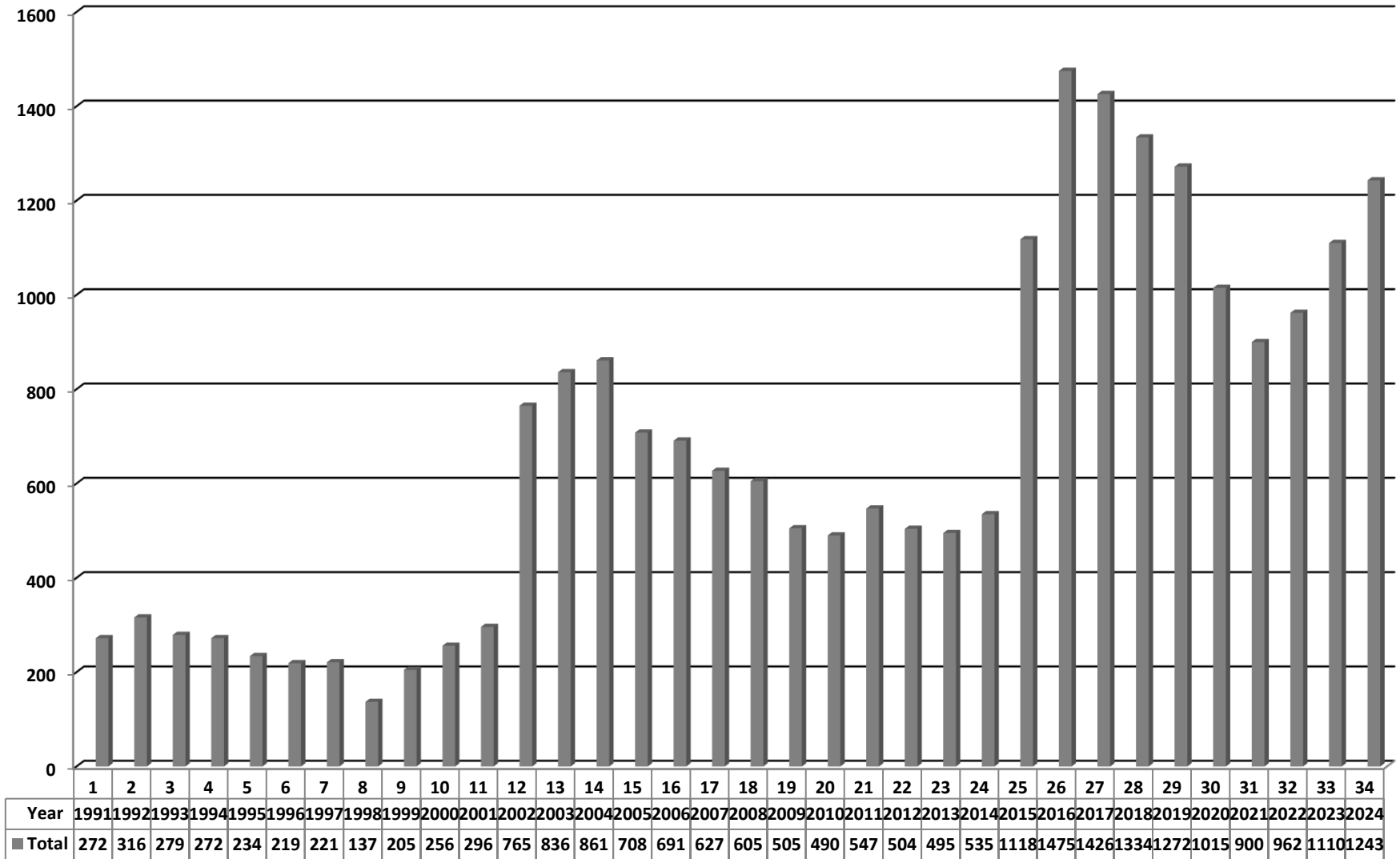
Minor Registration - Zone 4

34 Years



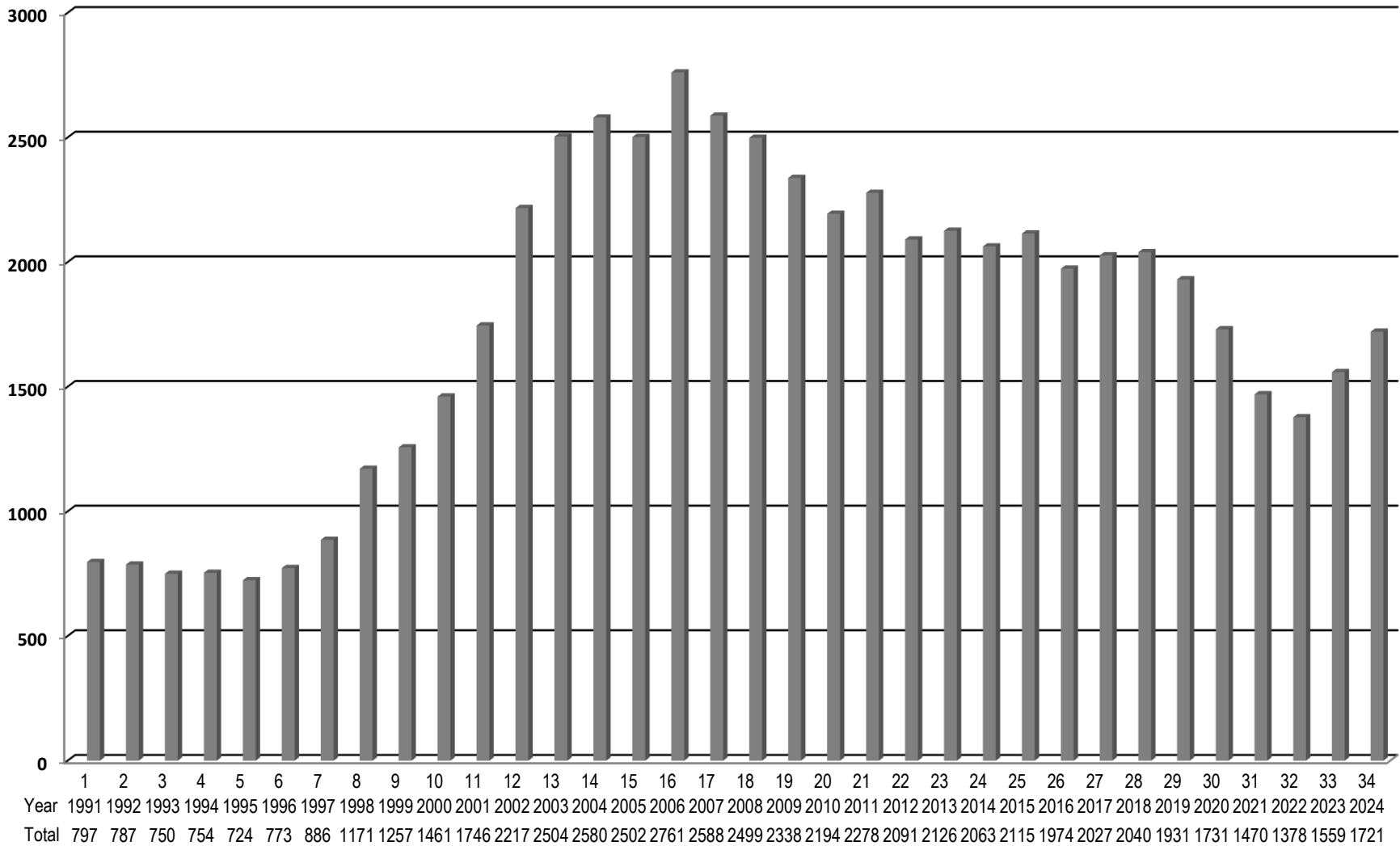
Minor Registration - Zone 5

34 Years



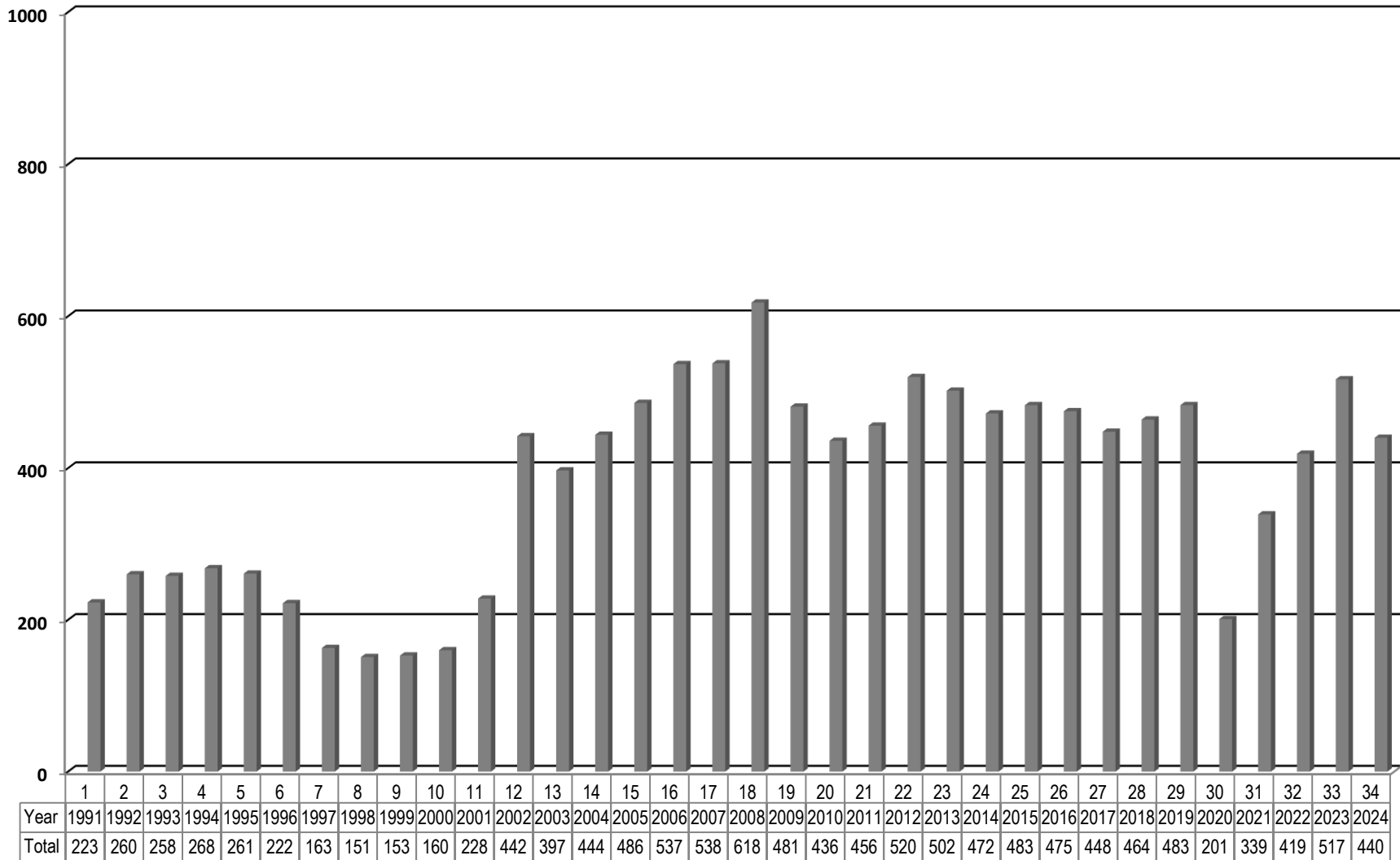
Minor Registration - Zone 6

34 Years



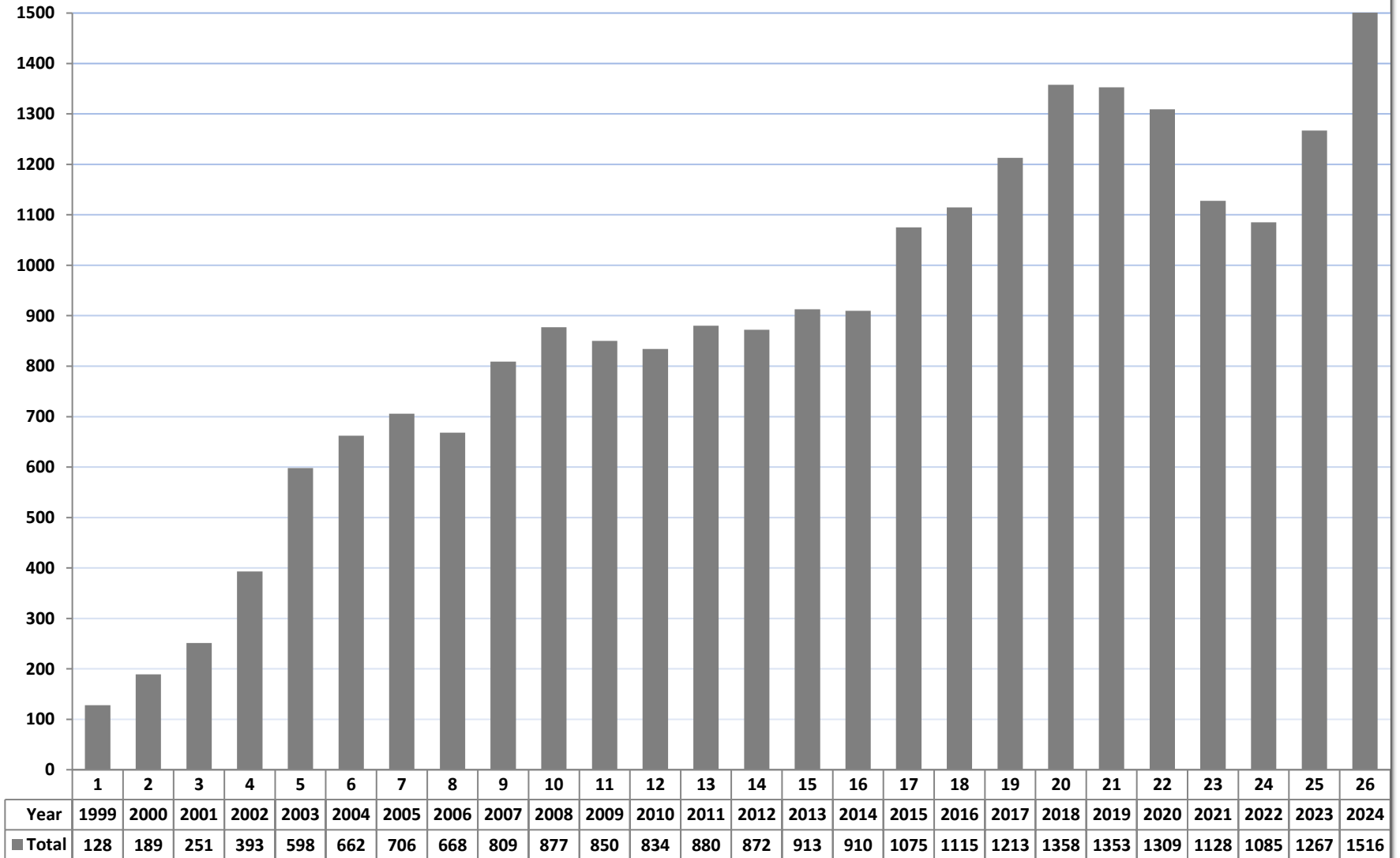
Minor Registration - Zone 8

34 Years



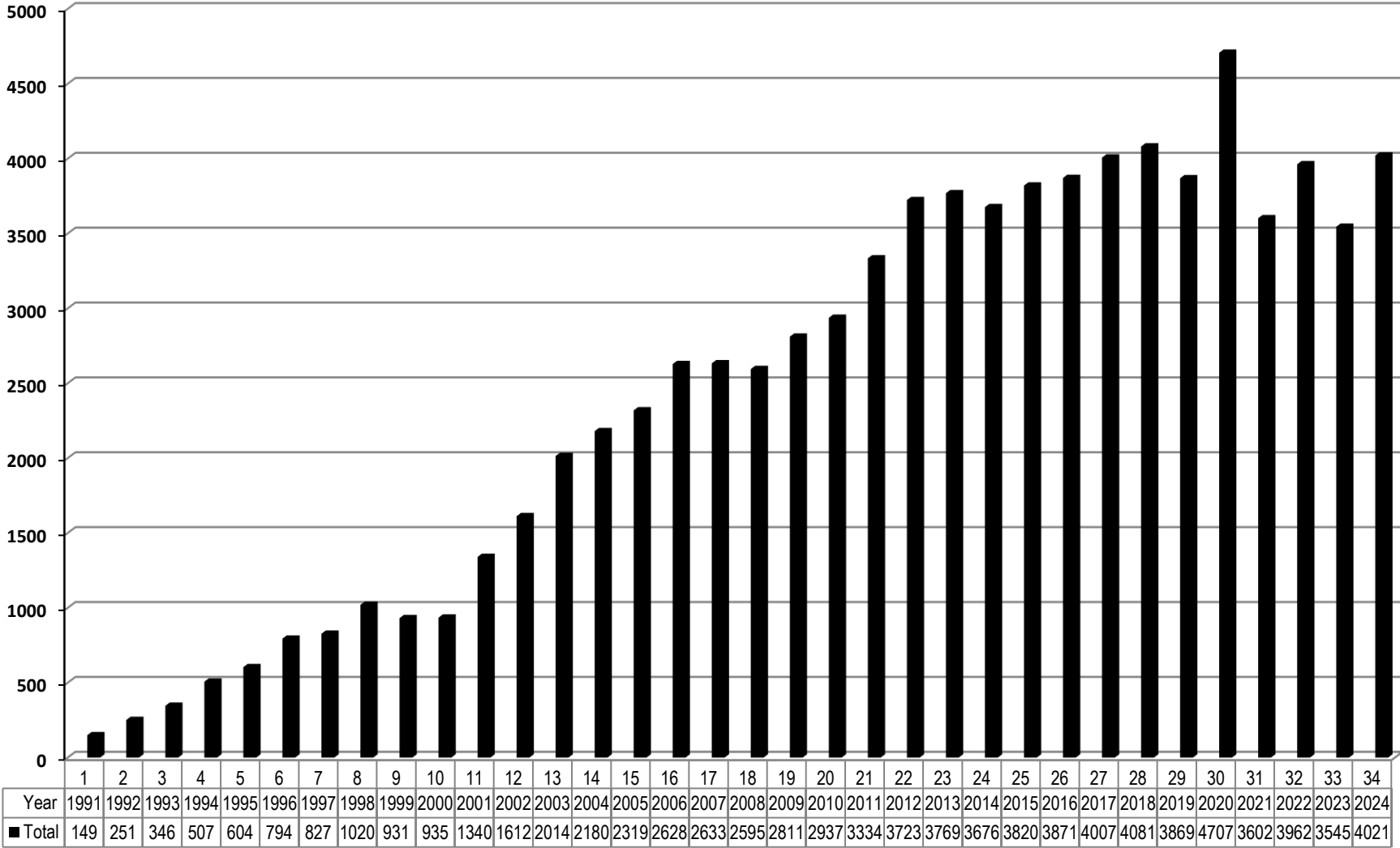
Female Minor Box Lacrosse Registration Statistics

26 Years



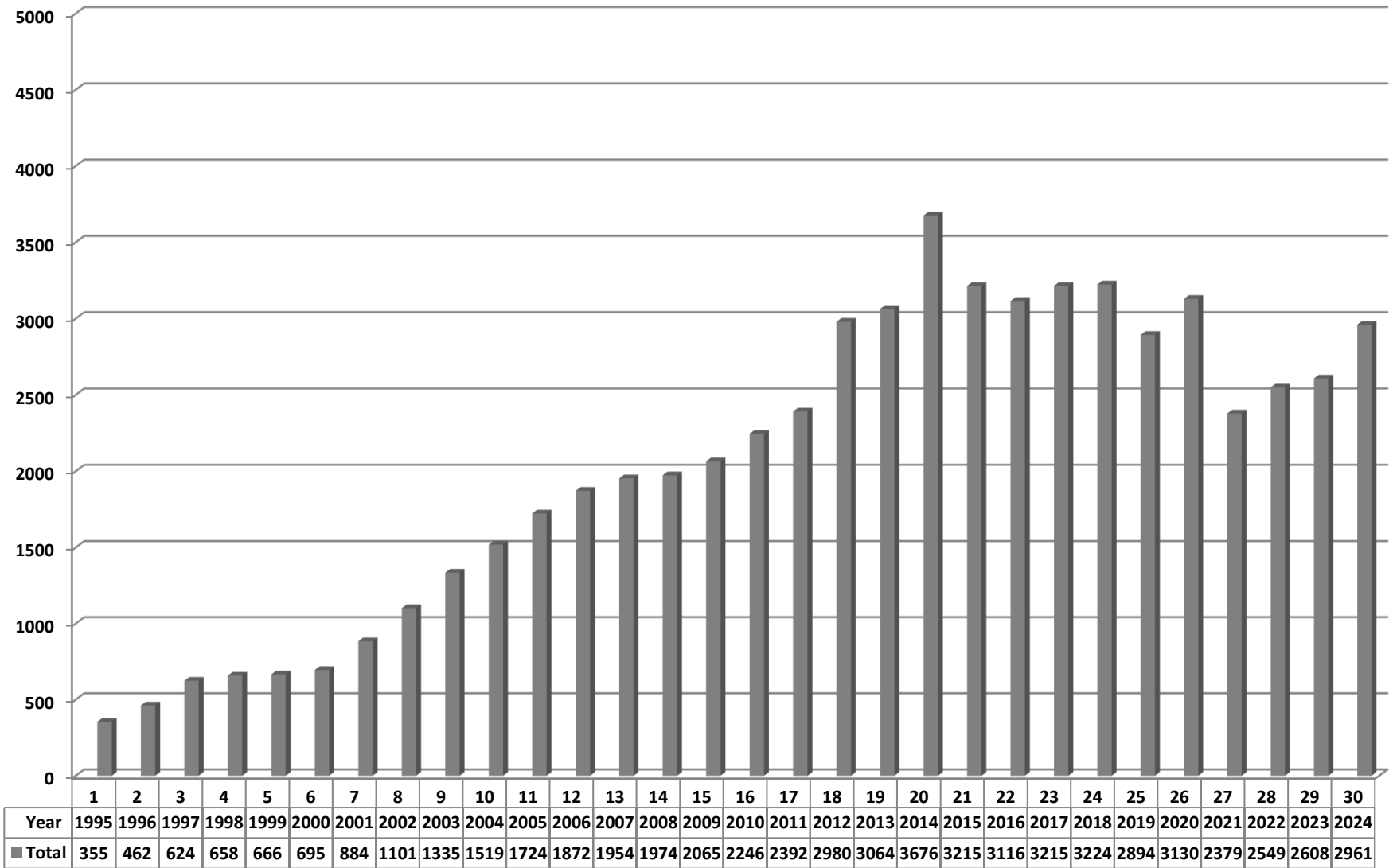
Field Registration Statistics

34 Years



Youth Field Registration Statistics

30 Years



Women's Field Registration 24 Years

